

*Uplifting
Tomorrow's
Leaders*



2022 AT A GLANCE

- served 471 Murphy Scholars
- welcomed our largest class of Scholars with 136 in the Class of 2026
- awarded 162 scholarships for the Class of 2027
- comprehensively updated our strategic plan
- returned to in-person programming, including Summer Bridge
- executed our most successful Golf Classic to date
- featured on the Wintrust mural, *Uplifting Tomorrow's Leaders*
- and, Murphy Scholars achieved amazing accomplishments—
 - > 100% acceptance to a four-year college or university
 - > 50% attained a GPA of 3.5–4.0
 - > over \$4 million awarded in grants and scholarships
 - > 87% six-year college graduation rate

Dear Friends,

With great gratitude and enthusiasm, we extend our heartfelt appreciation to each and every one of you who have been part of the incredible journey of the Daniel Murphy Scholarship Fund (DMSF). Since our establishment in 1989, our mission has remained steadfast: to enrich the lives of Chicago's youth by providing them with educational opportunities that would otherwise be beyond their reach.

As we reflect upon the past year, it is evident that we have not only honored the vision of our founders but also strengthened their legacy. Together, through the unwavering support of our dedicated Board and staff, and our invaluable network of champions, we have achieved remarkable milestones and celebrated numerous highlights throughout 2022.

In addition to these milestones, we reinstated in-person programming for Scholars, including Summer Bridge, creating immersive and transformative experiences for our Scholars. The execution of our most successful Golf Classic to date exemplified the generosity and commitment of our community. Furthermore, our organization proudly found itself featured on the Wintrust mural, symbolizing the recognition of our collective efforts in uplifting tomorrow's leaders.

Yet, the true measure of our success lies within the countless accomplishments of our Scholars and alumni. Their determination and resilience are awe-inspiring. Currently, we have over 2,200 Murphy Scholar alumni who are actively pursuing college degrees, following their career aspirations, and emerging as leaders within their respective fields. They are true agents of change, making a positive impact in their communities and beyond.

None of this would have been possible without your unwavering support and the devotion of countless individuals who, like you, believe in the potential of Chicago's youth and the power of education. At DMSF, our scholarships not only open doors to college preparatory high schools but also provide access to a robust network that unlocks opportunities. Through our programs, we nurture their interests, equip them with crucial skills and supports, provide valuable work opportunities to develop lifelong skill sets, and connect them with dedicated mentors who guide and empower them well beyond their high school years.

Your belief and commitment to our students are the driving forces behind our accomplishments. We are profoundly grateful for your ongoing partnership and eagerly look forward to collaborating with you in the upcoming year to continue investing in the remarkable journey of our Scholars.

Together, let us strive to uplift and empower the next generation of leaders, knowing that with each opportunity we provide, we shape a future that is brighter, more equitable, and filled with boundless possibilities.

Gratefully,



Cindy Hallums
Executive Director



Mark Ferguson
Chair, Board of Directors



The Impact of the Daniel Murphy Scholarship Fund

Chicago's educational landscape is filled with youth with endless potential and marked by disparities in opportunities, particularly when it comes to accessing quality high school education and preparing for successful college enrollment. The Daniel Murphy Scholarship Fund (DMSF) stands as a beacon of hope, addressing these inequities by providing promising 8th-grade students from diverse backgrounds with scholarships and comprehensive support programs. This introduction sheds light on the transformative impact of DMSF, highlighting its unique approach and the remarkable achievements of its Murphy Scholars.

Breaking barriers, transforming lives

As Chicago's largest high school scholarship granting organization, DMSF recognizes that a college degree is not merely a piece of paper but a gateway to opportunities, long-term employment and economic security. With this understanding, the Fund tirelessly endeavors to offer every young person, irrespective of their zip code or financial circumstances, an equal chance to flourish academically, socially, and emotionally at their chosen high school, in college and beyond.

Opening doors to opportunity

DMSF acts as a bridge, connecting talented 8th graders who demonstrate academic ability, strong character and financial need with scholarships for a quality high school education, and programmatic support to thrive at their schools. These exceptional Murphy Scholars not only gain access to outstanding educational institutions but also receive unparalleled personal support programs. Through comprehensive guidance and mentorship, DMSF equips its Scholars to navigate the complex journey toward college readiness and empowers them to choose the right educational and career paths for them.

The DMSF difference: nurturing success

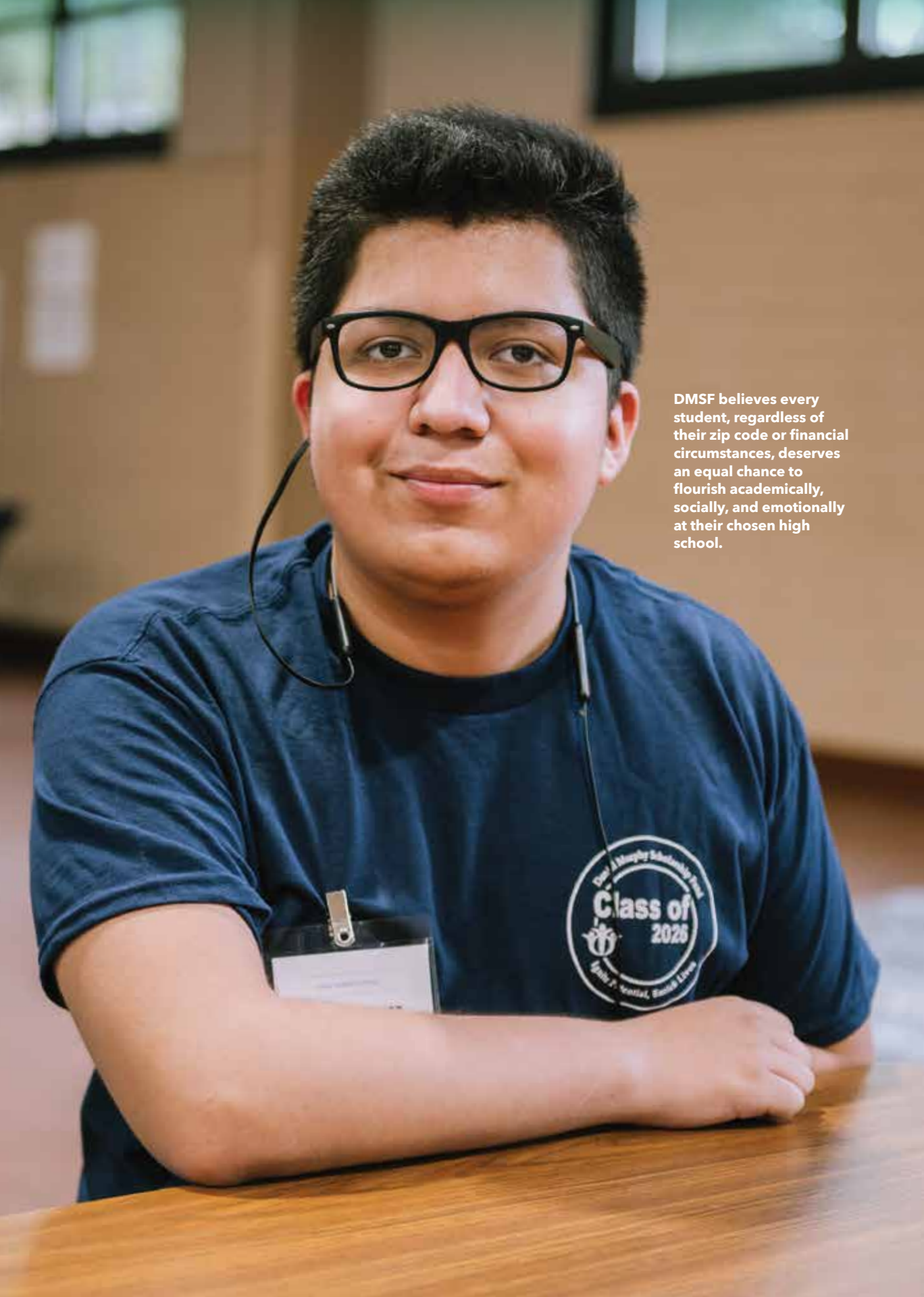
Beyond the essential provision of tuition support, DMSF distinguishes itself through its "Programs that Promote Persistence." These comprehensive support programs extend far beyond the high school years, ensuring that Murphy Scholars persist through graduation and continue to thrive afterward. By addressing both academic and social-emotional needs, DMSF nurtures the holistic development of each student, preparing them for success in high school, college, and beyond.

Impacting lives, empowering futures

The numbers speak volumes about the remarkable impact of DMSF. Currently, over 500 Murphy Scholars attend more than 80 partner schools in Chicago and across the nation. The combined annual value of DMSF's resources, including tuition assistance, college counseling, summer opportunities, tutoring, and mentoring, exceeds \$4 million. Notably, the Class of 2022 alone received over \$4 million in gift aid, with an average of \$50,000 per Scholar.

DMSF addresses both the academic and social-emotional needs of its Scholars which helps prepare them for success in high school, college, and beyond.





DMSF believes every student, regardless of their zip code or financial circumstances, deserves an equal chance to flourish academically, socially, and emotionally at their chosen high school.

Catalyzing change through education

In an era marked by educational disparities, the Daniel Murphy Scholarship Fund stands as a catalyst for change. Grounded in the belief that every student deserves a chance to succeed, DMSF's transformative impact reaches far beyond the realms of academics. By breaking down barriers and empowering young minds, the Fund is molding future leaders, visionaries, and change-makers who will shape a brighter tomorrow.

Empowering achievements

THE CLASS OF 2022

The achievements of the Class of 2022 exemplify the remarkable outcomes that DMSF enables. Every Murphy Scholar who applied was accepted into a four-year college or university, emphasizing the Fund's commitment to opening doors of opportunity. Furthermore, an impressive 96% of the Class of 2022 enrolled in a four-year college, reflecting their determination and readiness for higher education. With an average GPA of 3.4, these Scholars have demonstrated their academic excellence and preparedness for future success. DMSF's impact extends across 73 of Chicago's 77 neighborhoods, embracing the city's rich diversity. Scholars hailing from neighborhoods such as Austin, Chicago Lawn, Humboldt Park, South Lawndale, West Ridge, and West Town comprise a significant portion of the program. Moreover, DMSF also serves Scholars from Cicero and Berwyn. This extensive reach ensures that Murphy Scholars represent a broad spectrum of backgrounds and experiences, fostering a vibrant and inclusive community.

Preparing for the future

THE CLASS OF 2026 AND 2027

Looking ahead, the future holds great promise as DMSF continues to empower more students. The Class of 2026 comprises 136 Murphy Scholars, with 65% attended public schools and 35% attended parochial schools. The diverse student body consists of 54% female and 46% male Scholars, reflecting the Fund's commitment to gender equity. Notably, the Scholars are a testament to Chicago's multicultural fabric, with 48% identifying as Latinx, 34% as African American, and the remainder as Caucasian, Asian American, or multi-racial. The Class of 2026 represents over 40 zip codes, emphasizing the broad geographic impact of DMSF. Building on this momentum, the Class of 2027 consists of 142 eager Murphy Scholars, each equipped with the potential to achieve greatness and positively shape their communities.

By the numbers: DMSF impact

471

number of current Scholars who attend over 80 partner schools in Chicago and across the country



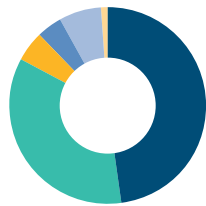
\$4M+

Annual combined value of tuition assistance, college counseling, summer opportunities, tutoring, mentoring and other programming provided to Murphy Scholars and alumni from DMSF. The average gift aid for Scholars from the Class of 2022 attending college was \$50,000, meaning more than \$4 million in total aid has been received.

CLASS OF 2022

100%

who applied were accepted into four-year colleges and universities



- 48% LATINX
- 35% AFRICAN AMERICAN
- 5% CAUCASIAN
- 4% ASIAN AMERICAN
- 7% MULTI-RACIAL
- 1% OTHER



3.4

average GPA

GPA

96%

enrolled in a four-year college



67%

are the first in their family to attend college or university



\$37,800

median family income of a Murphy Scholars family



CLASS OF 2026

136

Murphy Scholars



65%

attended public schools



35%

attended parochial schools



54%

female



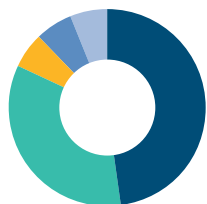
46%

male



40+

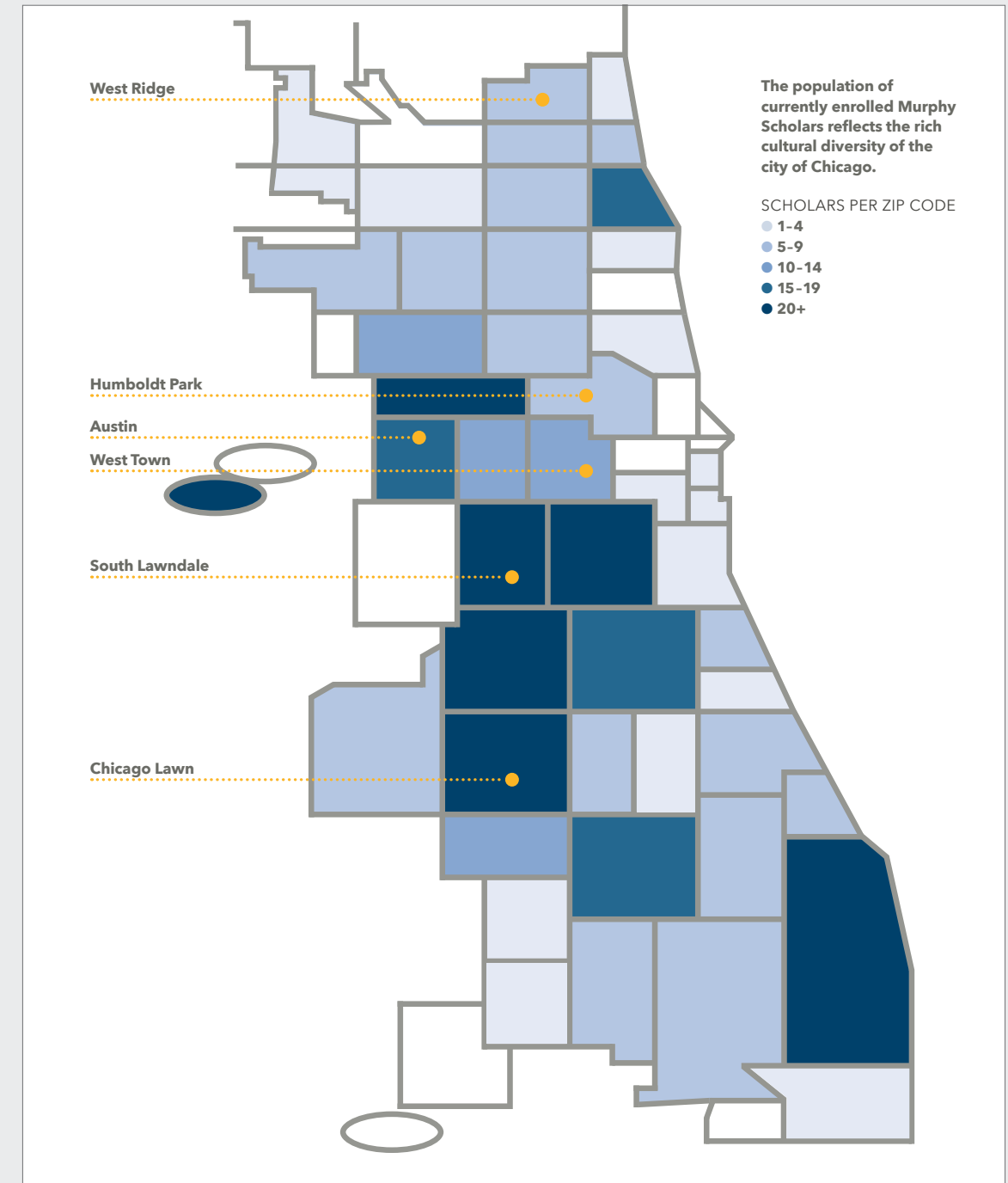
zip codes represented



- 48% LATINX
- 34% AFRICAN AMERICAN
- 6% CAUCASIAN
- 6% ASIAN AMERICAN
- 6% MULTI-RACIAL



MURPHY SCHOLAR REPRESENTATION BY NEIGHBORHOOD



73

Murphy Scholars represent 73 of Chicago's 77 neighborhoods.

The highest percentage of Scholars come from Austin, Chicago Lawn, Humboldt Park, South Lawndale, West Ridge and West Town.

DMSF also serves Scholars from Cicero and Berwyn.

Unlocking opportunities through education



ROCKY LOPEZ
Murphy Scholar
Class of 1999

We are privileged to highlight the inspiring journey of Rocky Lopez, a Murphy Scholar from the Class of 1999. Rocky's story exemplifies the life-changing impact that the Daniel Murphy Scholarship Fund has on the lives of talented young individuals.

Rocky Lopez, aware of the gang boundaries he would have to navigate in order to attend his local community high school, began looking to alternative educational opportunities early in his years in middle school. It was during a conversation with his eighth-grade teacher that he first discovered the transformation potential of the Daniel Murphy Scholarship Fund. Out of the five students that the teacher gave that application to, Rocky was the sole individual to complete and submit it. Little did he know that this seemingly small act would park a pivotal moment in his life—being accepted and admitted to Culver Academies in Culver, Indiana, a college preparatory boarding school for young men and being assigned a DMSF mentor.

"My mentor was unwavering in his guidance to me throughout my years at Culver and extended beyond just school support. He introduced me to his network of people here in Chicago," Rocky says, thinking back with a smile. "My mentor provided me with an internship in the investing industry during the summers. He introduced me to other DMSF board members. He introduced me to the world of finance."

Rocky wholeheartedly credits Culver Academy and DMSF for opening doors he never even knew existed. "I know some people may find it difficult to believe that a scholarship could have such a profound impact, but Culver changed my life. There is no doubt that my experience at Culver was hugely instrumental in developing my leadership abilities and problem-solving skills. Culver would not have been possible without DMSF. DMSF really does change people's lives."

The support from the DMSF goes beyond the scholarship funding. It's about the programs, connections, and relationships that allow all Scholars to thrive. "It's the people and relationships," Rocky confirms with conviction. The connections and relationships that the entire organization brings to each and every scholar is a wealth of resources, guidance and support that extends well beyond the financial aspect.

For DMSF Scholars like Rocky, it is those connections and relationships that allowed him to thrive and think about the possibilities beyond his high school years. After graduating from Culver Academy, Rocky continued his education at Emory University in Atlanta, Georgia, earning a degree in finance and accounting. Rocky also has an MBA from Northwestern University's Kellogg School of Management.

Today, Rocky is Principal and the Chief Financial Officer at The Randolph Group, a family private investment office in Chicago. Rocky's deep appreciation for the life-changing work that DMSF does for hundreds of Chicago high school students is evident through his unwavering commitment to giving back. He actively contributes his time, expertise and dedication by serving on the Executive Board Committee and taking on this role for the last two years as its Treasurer.

"My mentor was unwavering in his guidance to me throughout my years at Culver and extended beyond just school support."

ROCKY LOPEZ

We commend Rocky Lopez for his exceptional achievements and for exemplifying the transformative power of education. His story epitomizes the profound impact of the Daniel Murphy Scholarship Fund in unlocking opportunities for talented students.

Empowering dreams, transforming lives



DR. ARTIS LEWIS
Murphy Scholar
Class of 2008

We are honored to feature Dr. Artis Lewis, a remarkable Murphy Scholar from the Class of 2008. Artis's inspiring journey showcases the profound impact of the Daniel Murphy Scholarship Fund in fostering ambition, mentorship, and the pursuit of excellence.

As a young student, Artis recognized the importance of both starting and finishing strong in her academic journey. Attending a high school fair hosted by her grammar school, she came across the Daniel Murphy Scholarship Fund booth. Intrigued by the opportunity to attend a top-notch high school and benefit from mentorship, Artis eagerly applied to become a Murphy Scholar.

Becoming a Murphy Scholar opened a world of possibilities for Artis. She vividly remembers the countless individuals she met at networking events, successful individuals who believed in her potential. Among her supporters was Mrs. Clark, a DMSF board member at the time, who offered guidance and advice as Artis contemplated a career in law. Contrary to her expectations, Mrs. Clark encouraged her to explore her interests and embrace work-life balance, leading Artis to embark on a life-changing summer service trip to Costa Rica through The Road Less Traveled organization.

During her six-week stay in Costa Rica, Artis immersed herself in a diverse Spanish-speaking community, contributing to the construction of a schoolhouse, teaching Spanish, and participating in environmental conservation efforts. This transformative experience allowed her to reassess her passions, ultimately leading her to merge her interests in biology, health, and human rights into a career in medicine.

Inspired by the support and guidance she received from the Daniel Murphy Scholarship Fund, Artis remains committed to advocating for others. Throughout her educational journey, she leaned on the Fund's team for tutoring, writing improvement, and subject-specific coaching.

Their assistance extended beyond academics, providing Artis with mentorship and support as she navigated high school challenges.

Artis is a staunch believer in seeking help when needed, a principle instilled in her through her association with the Daniel Murphy Scholarship Fund. Recognizing the ripple effect of a single investment in a Murphy Scholar, she has actively shared her story with others in her community, encouraging them to seize the opportunity that the Fund offers.

Expressing her deep gratitude, Artis emphasizes the far-reaching impact of a DMSF scholarship. It not only benefits the Scholar but also extends to their family and community, fostering positive change and creating a brighter future for all.

Today, Dr. Artis Lewis stands as a testament to the power of support and belief in shaping one's destiny. Having graduated from the University of Chicago Laboratory Schools in 2008 as a Murphy Scholar, she obtained a bachelor's degree in Public Policy Studies from the University of Chicago. Continuing her academic pursuits, Artis earned a master's degree from Drexel University before attending the University of Illinois College of Medicine at Peoria. Currently, she serves as a resident physician at Ascension Saint Joseph Hospital Chicago, dedicated to providing primary care and pursuing global health missions.

We celebrate Dr. Artis Lewis as an embodiment of resilience, determination, and the transformative impact of the Daniel Murphy Scholarship Fund. Her unwavering commitment to her dreams, inspired by the belief and support she received as a Murphy Scholar, continues to shape her remarkable journey.

Inspired by the support and guidance she received from DMSF, Artis remains committed to advocating for others.

“Uplifting Tomorrow’s Leaders”

While much of our work at DMSF is done behind the scenes, there are moments when we get to shine a spotlight on our exceptional Scholars for a larger audience. In 2022, from November 16 to the end of the year, thousands of people had the chance to witness the remarkable impact of DMSF through a captivating mural displayed on the Wintrust Mural along the Kennedy Expressway, just two blocks north of North Avenue.

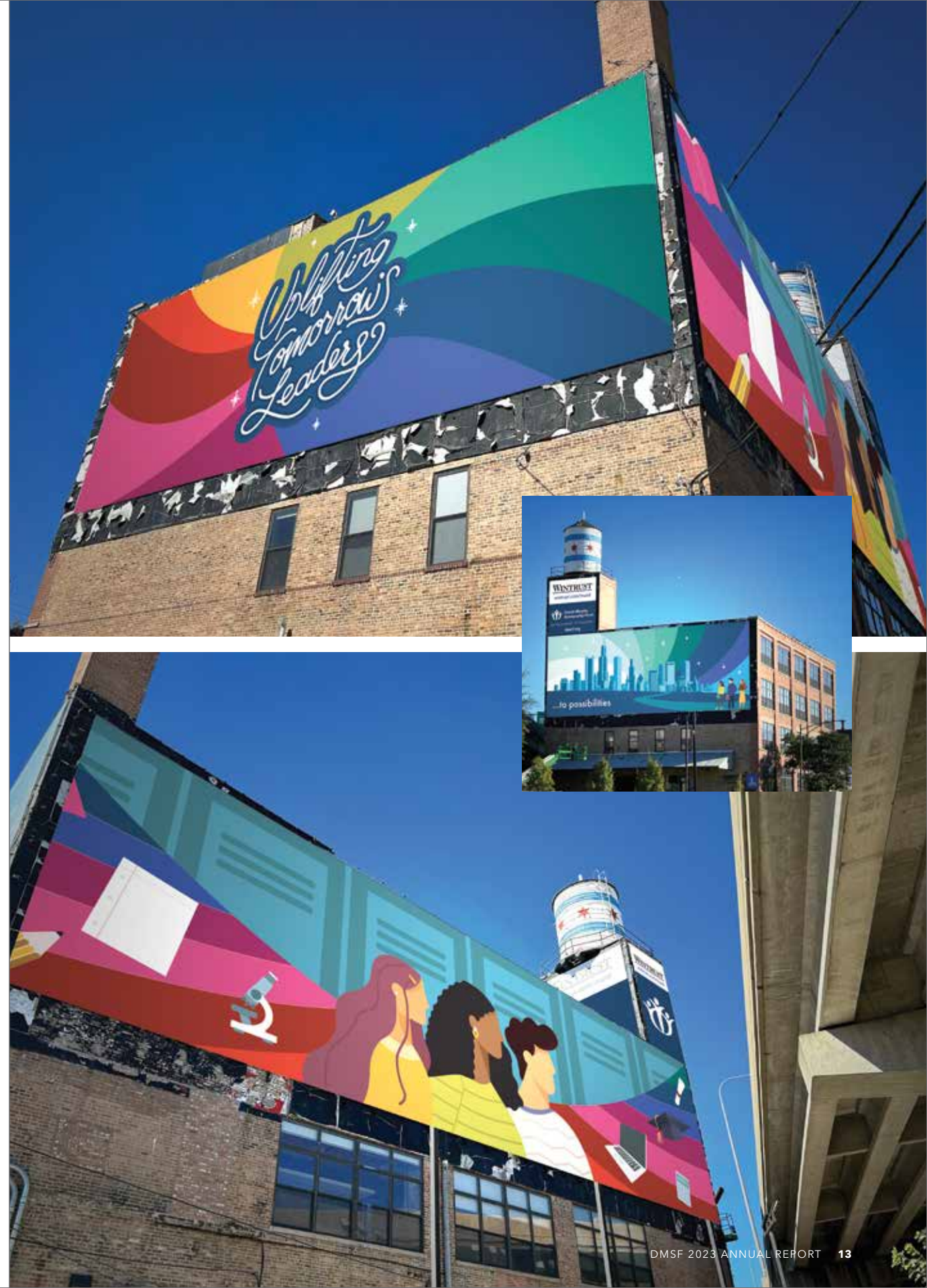
THE MURAL, TITLED “UPLIFTING TOMORROW’S LEADERS,” was commissioned by DMSF and designed by Karen Spears, a talented artist and a Murphy Scholar from the Class of 2013. This extraordinary artwork beautifully conveyed the motivation, resilience, and bright future of our Scholars as they strive to become the remarkable adults they are destined to be.

Not only did the mural catch the attention of passersby, but it also garnered extensive media coverage on prominent broadcast outlets in Chicago. Featuring stories on this eye-catching mural, and further spreading awareness about the important work DMSF does were:

- WTTW Chicago Tonight
- Fox32 Chicago
- WGN9 Chicago
- WBBM Newsradio 780 AM and 105.9 FM
- NBC5 Chicago
- WGN Radio

We extend our heartfelt gratitude to Wintrust Financial Corporation for their generous donation of the mural space and their ongoing support for our Murphy Scholars. It is through partnerships like these that we are able to uplift and empower the next generation of leaders.

➤ Thousands of people each day enjoyed the Wintrust Mural designed by Murphy Scholar and talented artist Karen Spears. Over the six-week period, more than half a million drove by the 27 feet tall and 240 feet wide piece entitled “Uplifting Tomorrow’s Leaders”.



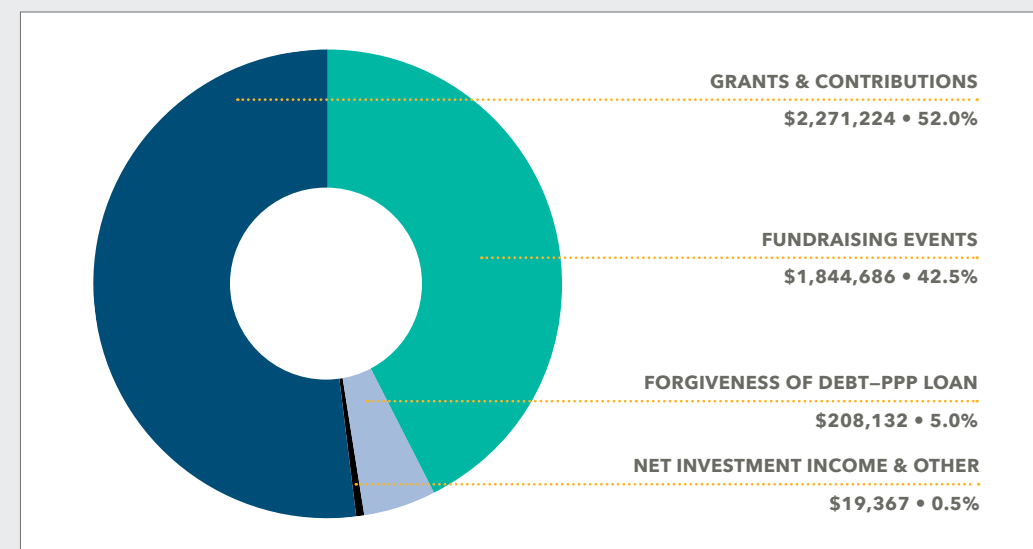
Colleges attending by Murphy Scholars Class of 2022

Augustana College	Southern Illinois University Carbondale
Babson College	St. Olaf College
Bates College	Syracuse University
Brandeis University	Texas Southern University
Case Western Reserve University	Trinity College
Columbia College Chicago	University of California, Los Angeles
Connecticut College	University of Chicago
Cornell University	University of Denver
Davidson College	University of Illinois Chicago
DePaul University	University of Illinois Urbana Champaign
Dominican University	University of Michigan
Eastern Illinois University	University of Missouri-Columbia
Grinnell College	University of Notre Dame
Harold Washington CC	University of Oregon
Harry S. Truman CC	University of Pittsburgh
Harvard University	University of Southern California
Illinois State University	University of Wisconsin-Madison
Ithaca College	Wake Forest University
Jackson State University	Washington University in St. Louis
Lake Forest College	Wheaton College
Lawrence University	Whitman College
Lehigh University	Whittier College
Lewis University	
Loyola University Chicago	
Marquette University	
Michigan State University	
Middlebury College	
Mount Holyoke College	
New York University	
Northern Illinois University	
Northeastern University	
Northwestern University	
Pitzer College	
Pomona College	
Purdue University-West Lafayette	
School of the Art Institute of Chicago	

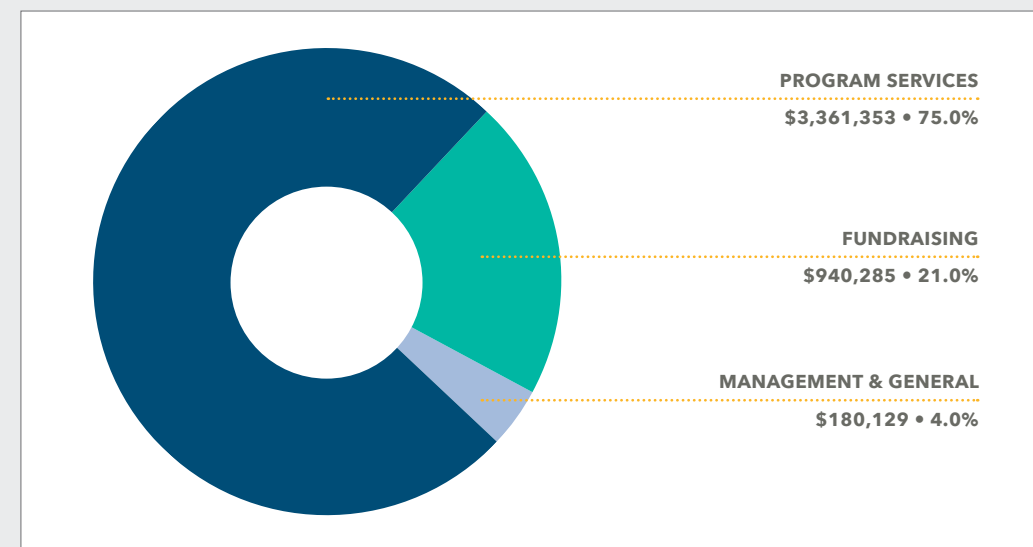


2022-2023 Financial highlights

OPERATING REVENUES



OPERATING EXPENSES



A CHARITY YOU CAN TRUST

Transparency and trust are crucial to the success of DMSF and we are proud to share that two of the leading charity evaluation groups recently awarded DMSF with their highest honors. We received a **Silver Seal of Transparency** from GuideStar and a **Four Star Charity Rating** from Charity Navigator signaling our strong commitment to financial accountability and transparency. DMSF joins a select group of organizations that have earned both honors. In the further interest of informing and educating our donors and partners, we have published more detailed financial information on our website.





“Young people are inherent leaders. They are deserving of an education that will open their minds and hearts to a world of possibilities. And when you give a young person the education they deserve, you’ll be amazed at the incredible heights they will reach.”

ARMANDO BARRON
 Murphy Scholar, Class of 2009
 Evans Scholar
 Marquette University, Class of 2013
 Current Director of Programs, DMSF

“The DMSF Summer Bridge program had a huge impact on me and I’m sure it did on everyone else. It helped me develop study habits, presentation skills and skills I didn’t even know I needed in high school. Not only did it help me in these ways but it helped me become an active speaker in class. After the Summer Bridge, I wasn’t afraid to speak up to raise my hand or even present first. It helped me make connections with not only my teachers but other peers as well and through these and many other ways Daniel Murphy has helped me become the student and person I am today, for which I’m very grateful.”

CITLALLI ALANIZ
 Murphy Scholar
 Fenwick High School, Class of 2024

“There will always be students like me who excel academically and have high hopes for a future but need a little assistance to make it happen. These last four years, DMSF has done more than pay for my tuition. They have connected me to so many programs that made me feel included and valued. It’s so easy for organizations that provide assistance to students to throw money at them and expect them to success only taking the gratification by saying they helped the student. Daniel Murphy is not that. They put the student before the money. They make sure that every Scholar has the opportunity to watch themselves grow as an individual, network with people and overall, make them feel like they matter.”

SAUL GALVAN
 Murphy Scholar, Class of 2022
 Evans Scholar
 University of Oregon, Class of 2026

“DMSF opens doors for students like me, who are first-generation, low income, and from immigrant communities. DMSF reaches students who otherwise wouldn’t have access to these opportunities or even know they exist. I’m beyond grateful to everyone at DMSF, who works tirelessly and with great affection to help students succeed in life.”

ALDO MALAQUIAS CABRERA
 Murphy Scholar,
 Class of 2020 St. Ignatius College Prep
 Evans Scholar
 University of Chicago, Class of 2024

DMSF Programs: Empowering the Murphy Experience

At the Daniel Murphy Scholarship Fund (DMSF), we understand that the success and well-being of our Murphy Scholars require more than just financial support. That's why we have developed a comprehensive range of programs, collectively known as the Murphy Experience, that nurtures their academic achievement, mental health, and overall growth. Together, we are shaping a future where every Murphy Scholar realizes their full potential and becomes a catalyst for positive change.

Here are some of the responsive programs we offer throughout the year to our Scholars and alumni—

FRESHMAN SUMMER BRIDGE

In 2022, after a hiatus due to COVID-19, DMSF successfully reinstated the Freshman Summer Bridge program as an in-person experience. This two-week summer workshop is a crucial step for newly-admitted Murphy Scholars, preparing them for the rigorous academic environment of our partner schools and college preparatory curricula. The Summer Bridge program offers classes and workshops in core subjects, leadership development, study habits, strategies, speech, wellness and writing. By focusing on self-advocacy, time management, organizational skills, note-taking, and self-care, we equip Scholars with essential tools to excel academically and support their overall well-being.



MENTORING & AFFINITY GROUPS

Recognizing the emotional, academic, and social adjustments that many Murphy Scholars face in high school, we provide mentoring and affinity group programs. Scholars who request a mentor are matched with dedicated individuals who serve as confidants and advisors, ensuring their success. Additionally, our group mentoring program, Affinity Groups, creates a space for Scholars to stay connected and support each other throughout the year. Led by Murphy Alumni, these groups engage in conversations about identity, leadership, personal growth, and take part in excursions that explore the vibrant offerings of Chicago.

CADDIE PROGRAM

Our esteemed Caddie Program provides up to 140 Scholars with valuable job experience and a means to earn spending money during the summer. Scholars caddy at local country clubs, gaining independence and personal growth while residing in college dormitories. By participating for three summers, Murphy Scholars become eligible to apply for the prestigious Chick Evans Scholarship, a full-tuition and housing college scholarship sponsored by the Western Golf Association. This program has had a profound impact on the personal growth and maturity of many Murphy Scholars.



HIGH SCHOOL TUTORING

Our Scholars are high achievers, with 50% maintaining a GPA between 3.5 and 4.0. To support all Scholars in meeting or surpassing the minimum requirement of a 3.0 GPA, DMSF offers professional, in-person, and virtual tutoring services. The Andy David Tutoring Center, established in 2015, is staffed by expert tutors who accommodate busy schedules, helping Scholars excel academically. On average, 10 Scholars visit the center each day it is open, with 93% reporting that tutoring significantly improved their grades.

COLLEGE COUNSELING

DMSF is committed to guiding Scholars and their families through the college exploration, selection and application processes. Our four-year college counseling curriculum equips each Murphy Scholar with resources to find their best college fit academically, financially, culturally, and socially. The curriculum includes comprehensive discussions on life after high school, college exposure, standardized test preparation, college tours, seminars on different types of schools, scholarship opportunities, financial aid guidance, application assistance, and enrollment support. Through one-on-one advising, we ensure that 87% of Murphy Scholars graduate, or are on track to graduate, with a bachelor's degree within six years.



ALUMNI SUPPORT

Our Alumni play a vital role as ambassadors for the Murphy Scholars community. We are committed to their continued success, as our relationship extends beyond high school graduation. Our Alumni Support programs, overseen by the Director of Alumni Affairs and College Support, provide meaningful support to alumni enrolled in college and assist in their professional career development. These programs include social activities, workshops on the transition to college, college majors and careers, as well as internship opportunities, ensuring a smooth transition into post-secondary education and beyond.

Supporting the success of Murphy Scholars

At the Daniel Murphy Scholarship Fund (DMSF), there are numerous meaningful ways to contribute and support the achievements of our Murphy Scholars.

By engaging in these opportunities, you can make a lasting impact on the lives of academically-driven students from economically under-resourced schools.

Here are several avenues through which you can get involved—

GOLF CLASSIC

Join hundreds of golfers and friends at our annual Golf Classic held in June. Experience a day of golfing at renowned private courses in the Chicago area, including Conway Farms, Exmoor, Knollwood, Shoreacres, and Skokie. Afterward, gather for cocktails and dinner at Exmoor Country Club. Companies are invited to sponsor the event as well as attend. Visit dmsf.org/golf to learn more.



ANNIVERSARY GALA

Save the date for our next anniversary gala, to be held on Saturday, September 21, 2024, where we celebrate the accomplishments of thousands of Murphy Scholars. While our last in-person gala took place in September 2019 and raised an impressive \$1.5 million, we eagerly anticipate future opportunities to come together. Visit dmsf.org/gala for updates.



ASSOCIATE BOARD

Our Associate Board, consisting of young leaders and professionals, including several Murphy Scholar Alumni, meets quarterly to support our Scholars and introduce new partners to our program. They organize engaging social and digital media campaigns, networking events like Soirée for Scholars, and other initiatives that connect supporters and donors. This year's Soirée for Scholars welcomed 275 guests and raised \$138,000, marking it as the largest Associate Board event to date.



CORPORATE PARTNERS

Corporate partnerships play a pivotal role in supporting DMSF and our Murphy Scholars. Many corporations offer Matching Gifts programs, amplifying their employees' donations. Some corporations provide charitable giving, sponsor annual events, or engage in corporate partnership programming. Others connect with our Scholars as mentors. We welcome opportunities to collaborate with businesses and explore innovative ways to provide invaluable support to our Scholars.



FULL CIRCLE SOCIETY

Investing in a Murphy Scholar goes beyond a one-time scholarship. It entails a full circle commitment, enabling generous donors to witness the transformative impact they make in a Scholar's life. Through our monthly giving program, the Full Circle Society, you can help unleash the potential of these motivated individuals. By supporting them throughout their high school journey and beyond, you empower them to achieve great things in their careers, share their successes with their families, and make a positive impact in their communities.



GIVE A FINANCIAL CONTRIBUTION

Our work is not possible without the generous support of our donors. Supporters can make a one-time gift or set up a recurring donation via our website. It can be made anonymously or on behalf of an organization. For donation assistance, please visit dmsf.org/donate or call 773-206-3866.



LEAVE YOUR LEGACY

If you are interested in leaving a lasting impact on the education of deserving students, we invite you to explore our planned giving program. Contact our development office at 312-455-7802 or development@dmsf.org to learn about the various planned giving options available, such as direct bequests, retirement account distributions, endowment funds, charitable lead trusts, and charitable gift annuities. Our team will work with you individually to find the best approach that aligns with your needs and enables you to make a lifelong difference, all while preserving your family's financial well-being.



GET INVOLVED

We are grateful for the support of our dedicated volunteers, whose contributions are instrumental in fulfilling our mission. There are numerous ways to get involved, including interviewing Scholar candidates, serving as a mentor, or joining a committee. Every year, our volunteers generously contribute thousands of hours of service, enriching the lives of academically-qualified students. Whether you can spare a few hours or commit to regular volunteering, such as mentoring or committee involvement, we would love to hear from you. To learn more or express your interest, please visit dmsf.org/volunteer.



DMSF leadership 2022-2023

BOARD OF DIRECTORS

Officers

Chair
Mark Ferguson
Partner, Bartlit Beck LLP

Vice Chair
Mary Jo DeMaio
Community Philanthropist

Secretary
Molly Carroll
*Executive VP
Tenant Representation
Jones Lang LaSalle*

Treasurer
Rocky Lopez●
*Principal and CFO
The Randolph Group*

Executive Committee

Olivia Carberry●
*Assistant General Counsel
Exelon*

Molly Carroll
*Executive VP
Tenant Representation
Jones Lang LaSalle*

Wheeler Coleman
*CEO and Founder
Executive Consultants United*

Kevin Conway
Partner, Cooney & Conway

Mary Jo DeMaio
Community Philanthropist

Mark Ferguson
*Partner, Bartlit Beck Herman
Palenchar & Scott LLP*

Tony Goodman
*Executive Director
Pinnacle Treatment Centers*

Michael King
*SVP, Financial Markets
and Funds Group
Wintrust Financial*

Yan Krasov●
*Research Analyst
William Blair*

Rocky Lopez●
*Principal and CFO
The Randolph Group*

Wendy Manning
*Managing Principal
Demeter Strategy Design*

Mary O'Leary
*Retired, Executive VP, HR
Publicis Media*

John Ormsby
*Retired, Director of Health
Services, US Foods*

Brad Schotanus
*Senior Vice President
Wintrust Commercial
Banking*

Will Torres
*Associate Equity Specialist
for Admissions, Whitman
College and current Student
at Harvard Graduate School
of Education*

Board Members

Jorge Alonso
*US District Judge for the
Northern District of Illinois*

Hank Bernbaum
*Founder and Former Chairman
High Sierra*

Chris Boehm
*Managing Partner
Cresset Partners Private
Capital*

Mar Borie
Private Educator

Bob Brown
*Senior Vice President, UBS
Global Asset Management,
Inc.*

Teri Brown
Community Philanthropist

Dana Butler
*Former Principal
Irma C. Ruiz Elementary
School*

Gil Calderon
*Chief Investment Officer
M4 Capital Management*

Amy Carnahan
Senior Vice President, Marsh

Christopher Carlson
*Former COO, Asset
Management, Northern Trust*

Tracy Clark
*Records Coordinator
Bartlit Beck LLP*

Brad DeHond
*Managing Director
Morgan Stanley Private
Wealth Management*

Tim Donohue
Partner, Lantern Partners

Michael Earley
Partner, Jones Day

James Epstein
Retired, Appellate Judge

Fred Fisher
Partner, Mayer Brown

Justin Foley
*Head of Trading
The Gelber Group*

Chuck Gately
*Founder and Former
Chairman of the Board
LaSalle Systems*

Sally Giegerich
*Senior Vice President
Northern Trust*

Katie Gottfred
*President and Founder
LEAP Learning Systems*

Ellen Hoover●
*Diversity and Inclusion
Manager, Skadden, Arps,
Slate, Meagher & Flom LLP*

Jason Kang
*MD United States Area
Medical Director, Abbott*

Jim Kaplan
*Lead Portfolio Manager,
Structured Products, National
Investment Services*

Patrick Kempton
*Managing Director
PGIM Real Estate*

Chris Klingenstein
*President, Albatross
Wine Co. / CaSK Trading
School*

Jim Lynch
*Retired, Partner,
Winston & Strawn LLP*

Erin Mathurin
*Director, Head of North
America Global Accounts,
LinkedIn*

Brittany Merritt
*Principal & Founder
The Merritt Group LLC*

Michael Millhouse
*Retired
Chief Investment Officer
Chicago Equity Partners LLC*

Pete Mulvey
Partner, RSM US LLP

Betsy Murphy
Registered Nurse

Gretchen Murphy
*Assistant Deputy Director,
Illinois Department of
Commerce and Economic
Opportunity*

Odalo Ohiku●
*Deputy City Attorney
City of Milwaukee*

Ralph Perez
*Counsel
Mergers and Acquisitions
Skadden, Arps, Slate,
Meagher & Flom LLP*

Jennifer Richert
*Associate Director
Shirley Ryan AbilityLab*

Scott Rubenstein
*Managing Director
BMO Harris Bank*

Jeremy Schlee
*Partner
PricewaterhouseCoopers*

Frank Schmitz
*Partner
PJT Partners and Co-Head
& Co-Founder of PJT Park Hill
Real Estate Group*

Greg Shearson
CEO, Cerebelly

Peter Skoglund
*Former Vice Chairman
of Private Banking
USA Credit Suisse Group AG*

Emanuel Tabachnik
Community Philanthropist

Mark Van Grinsven
*Retired, Executive VP
Northern Trust*

Nancy Van Grinsven
Community Philanthropist

Allen Weaver
*Senior Managing Director
Prudential Capital Group*

Andy Weaver
*Client Development Advisor
RMB Capital*

Greg Zeeman
CEO, Oasis Financial

CHAIRMAN'S COUNCIL

Phil Beck
Partner, Bartlit Beck LLP

Bob Cooney
Partner, Cooney & Conway

Loretta Cooney
Community Philanthropist

Tom Dwyer, Sr.
*Partner
Thomas J. Dwyer
& Associates*

Steve Elkins
*Partner, Financial Advisor
William Blair*

David Grumhaus, Sr.
*Retired, EVP
Administration, Development
and Acquisitions, Worldwide
Chain Store Systems Ltd.*

Bruce Hague
*Executive Managing Director
and President of National
Commercial Banking and
Regional Markets, CIBC*

Craig Henderson
*President
C.W. Henderson & Associates*

Jerry Johnston
*Chairman of the Board
PinpointCare*

Tom Kearney
*Partner
Moran & Company*

Mike Keiser
*Owner
Bandon Dunes Golf Resort*

Scott Kilrea
*Retired, President
The Letco Group LLC*

Roger McEniry
*Partner, Dolan, McEniry
Capital Management*

Tom Moran
*Chairman
Moran & Company*

Jim Murphy
*President and Chairman
Grow Forward*

Bob Murphy
*SVP, Commercial
Real Estate Services
Wintrust Financial
Corporation*

John Russell
*Founder
Versatile Capital
Management*

Ira Schulman
*Managing Principal
and Co-Founder
Walton Street Capital*

David Shaw
*Managing Partner
Harbor Capital LLC*

Bill Shean
President, Shean & Co. Inc.

Bob Thomas
Community Philanthropist

Lee Tenzer◆
*Retired, Chairman and CEO
The Letco Group, LLC*

ASSOCIATE BOARD

Officers

Chair
Elisa Manrique●
Goldman Sachs

Vice Chair
Karl Morcott
Accenture

Secretary
Tia Reid●
BMO Financial Group

Treasurer
Rodrigo Serna
Vista Equity Partners

Board Members

Michael Adegoke●
Post-Baccalaureate Student

Kyrie Agee●
RSM

Kathryn Arkin
Northwestern Medicine

Matthew Clark
Merrill Lynch

Michael Clewlow
Venture One Real Estate

Rogelio Duenas●
ComEd

Michael Educate
*Barack Ferrazzano
Kirschbaum & Nagelberg LLP*

Ashley Fisher
Balyasny Asset Management

Jessica Glyman
Dolan McEniry

Jake Hamlin
Merrill Lynch

Manny Hodzic●
William Blair

Patrick Hogan●
Sidley Austin, LLP

Jack Howell
JP Morgan

Bryan Jacobson
Chapman and Cutler LLP

Bobby Jewell
Guaranteed Rate

Isha Jordan
United

Katie Kilrea
Adams Street Partners

Sean Kilrea
Citadel

Nicholas Kollias
JP Morgan

Kevin Konsler
Ridgewood High School

Ryan Konsler
Merrill Lynch

Stephen Konsler
Vestor Capital

Salvatore Licata
PepsiCo

Tom Lyons
RSM

Janie McDonough
Cressey & Co.

Ryan Martin
Barry Callebaut

Khalifah Muhammad●
*US Railroad Retirement
Board*

Jack Murphy
Wintrust

Kelly Murphy
PepsiCo

Lauren Murphy
Milliman

Jessica Narvaez●
FCB Chicago

Rebecca Peigh
*Brownson, Rehms &
Foxworth, Inc.*

Brittany Restauri
PwC

Tory Rezin
Coldwell Banker

Maggie Rocha●
PwC

Alejandro Roman●
William Blair & Co.

Dick Schiller
Duff & Phelps

Madelyn Schiller
William Blair & Co.

Ross Schoenfeld
Cross Keys Capital, LLC

Katelynn Soto●
*Robert H. Lurie
Comprehensive Cancer
Center*

Ryan Suniga
U.S. District Courts

Matthew Taylor
Morgan Stanley

Alexandra Wallace●
West Monroe Partners

Alex Wildes
*MBA Candidate
The University of Chicago
Booth School of Business*

Konrad Wilk●
Eversight

Ben Woldenberg
Sherman Residential

● Murphy Scholar Alumni
◆ In memoriam

DMSF partner schools

Day Schools

CO-EDUCATIONAL SCHOOLS

Beacon Academy
Chicago Academy for the Arts
Chicago Hope Academy
Chicago Waldorf School
Christ the King Jesuit
Cristo Rey Jesuit H.S.
DeLaSalle Institute
DePaul College Prep
Fenwick High School
Francis W. Parker School
Global Citizenship Experience Lab School
Holy Trinity
Ida Crown Jewish Academy
The Latin School of Chicago
Loyola Academy
The Lycee Francais de Chicago
Marian Catholic
Marist High School
Morgan Park Academy
Nazareth Academy

North Shore Country Day School
Providence St. Mel School
Roycemore School
St. Ignatius College Prep
St. Laurence High School
The University of Chicago Laboratory School

BOYS' SCHOOLS

Brother Rice
Mount Carmel High School
Northridge Prep School
Notre Dame College Prep
St. Patrick High School
St. Rita of Cascia High School

GIRLS' SCHOOLS

Hanna Sacks Bais Yaakov High School
Josephinum Academy
Mother McAuley Liberal Arts High School
Regina Dominican High School
Trinity High School
The Willows Academy

Boarding Schools

CO-EDUCATIONAL SCHOOLS

Berkshire School
Brooks School
Choate Rosemary Hall
Concord Academy
Culver Academies
Cushing Academy
Deerfield Academy
Episcopal High School
George School
The Governor's Academy
Groton
The Hotchkiss School
The Hun School
Interlochen Center for the Arts
Lake Forest Academy
LaLumiere School
Lawrence Academy
The Lawrenceville School
The Loomis Chaffee School
Middlesex School
Millbrook School
Milton Academy
Northfield Mount Hermon School
Phillips Andover Academy
Phillips Exeter Academy
The Putney School
Shattuck-St. Mary's School

St. Andrew's School
St. George's School
St. John's Northwestern Military Academy
St. Mark's School
St. Paul's School
Stevenson School
Suffield Academy
Tabor Academy
Thacher School
Wasatch Academy
Wayland Academy
The Webb Schools
Western Reserve Academy

BOYS' SCHOOLS

Salisbury School
The Church Farm School
Upper Canada College

GIRLS' SCHOOLS

Emma Willard School
Garrison Forest School
Miss Porter's School
Woodlands Academy

CO-EDUCATIONAL ACADEMIC/RESIDENTIAL PROGRAMS

Mooseheart
Boys Hope Girls Hope

DMSF IS CHICAGO'S LARGEST HIGH SCHOOL SCHOLARSHIP ORGANIZATION

We identify promising 7th and 8th graders and provide them with scholarships for a quality high school education.

We provide every Murphy Scholar with educational and personal support programs.

We assist graduating Scholars in preparation for college, and guidance for the right college fit.

We help Murphy Scholars persist through high school graduation, providing resources and programs they may not otherwise be able to access.



309 W. Washington
Suite 700
Chicago, IL 60606
312.455.7800
dmsf.org

CONNECT WITH US

@MurphyScholars



